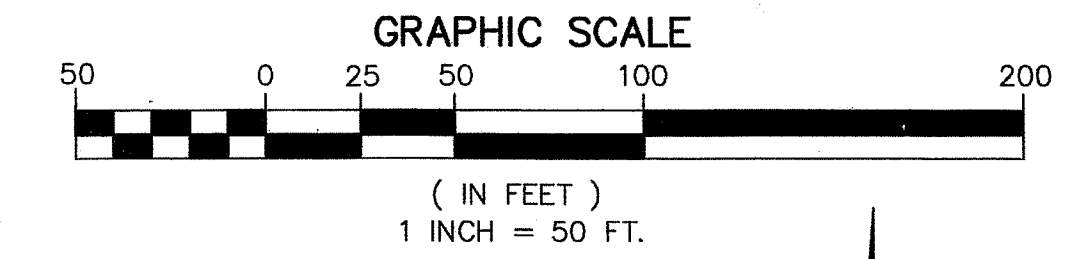


# VISTA LAGO

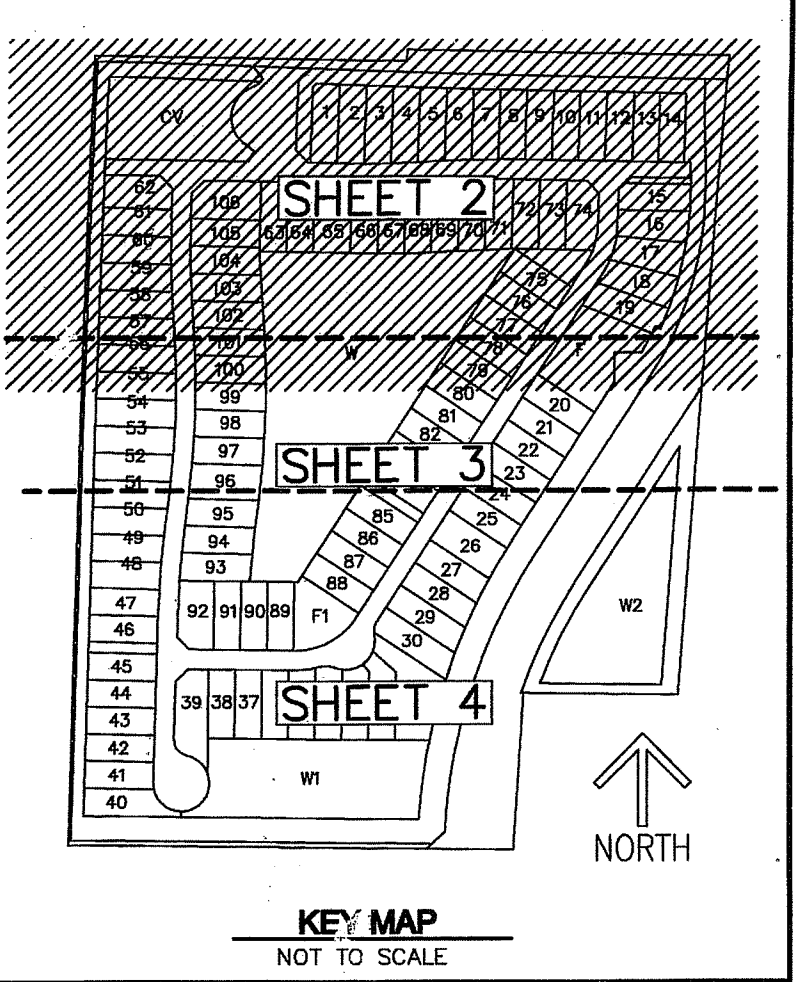
ABELL PROPERTY, P.U.D.  
A PLANNED UNIT DEVELOPMENT,  
BEING A PORTION OF SECTION 11, TOWNSHIP 45 SOUTH, RANGE 42 EAST, PALM BEACH COUNTY, FLORIDA

THIS INSTRUMENT PREPARED BY  
DAVID P. LINDLEY  
OF  
**CAULFIELD and WHEELER, INC.**  
SURVEYORS - ENGINEERS - PLANNERS  
7301-A WEST PALMETTO PARK ROAD, SUITE 100A  
BOCA RATON, FLORIDA 33433 - (561)392-1991  
JANUARY - 2012



106

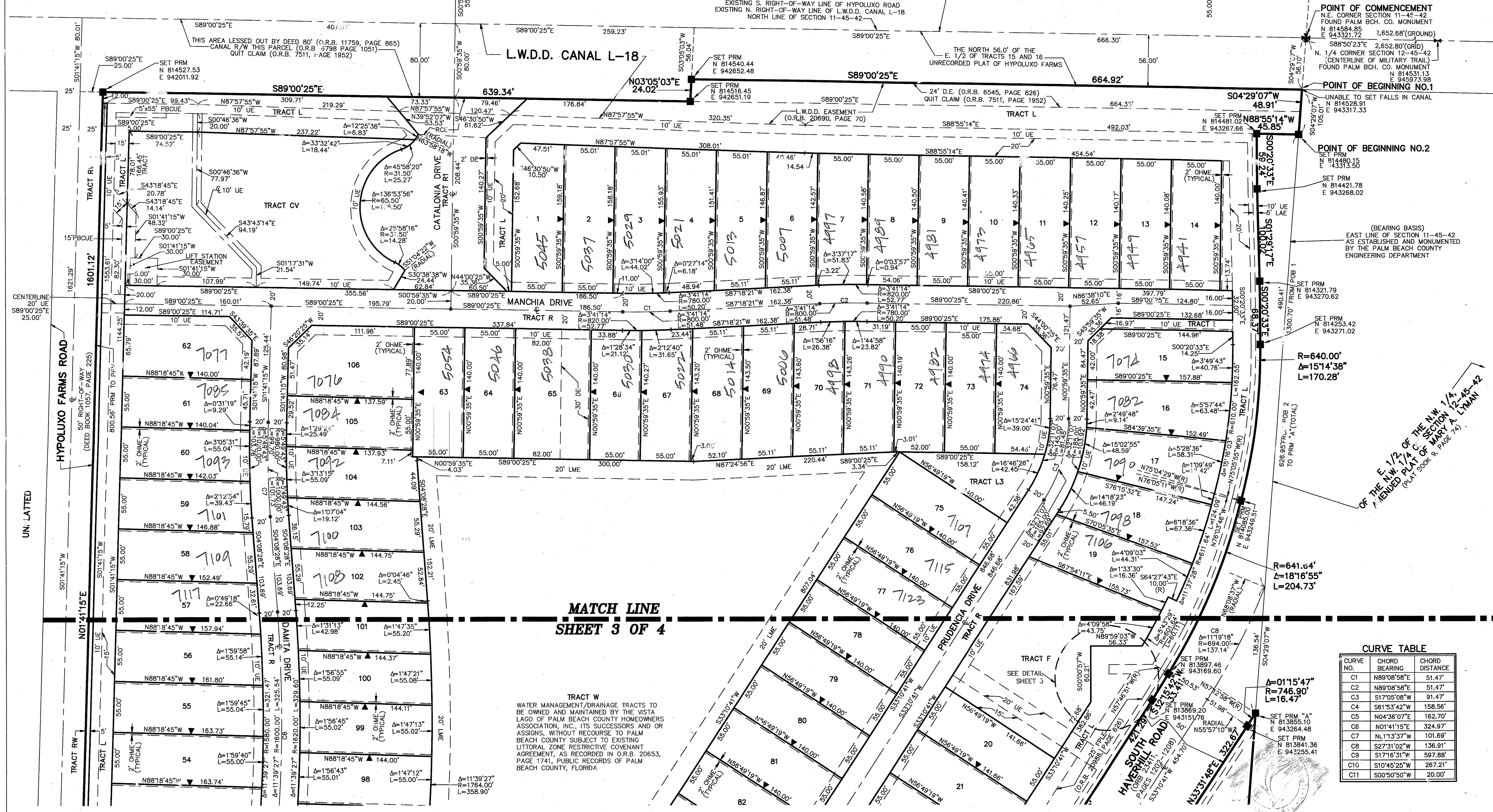
STATE OF FLORIDA  
COUNTY OF PALM BEACH  
THIS PLAT WAS FILED FOR  
RECORD AT \_\_\_\_\_ M.  
THIS \_\_\_\_\_ DAY OF  
A.D. 2011 AND DULY RECORDED IN  
PLAT BOOK \_\_\_\_\_ ON  
PAGES \_\_\_\_\_ AND \_\_\_\_\_  
SHARON R. BOCK  
CLERK AND COMPTROLLER  
BY: \_\_\_\_\_  
DEPUTY CLERK



0952-00)  
HYPOLUXO/HAVERHILL P.U.D.-PLAT ONE  
(PLAT BOOK 94, PAGES 31-39)  
NORTH RIGHT-OF-WAY LINE  
(PLAT BOOK 94, PAGES 31-39)

HYPOLUXO/HAVERHILL P.U.D.-PLAT ONE  
(PLAT BOOK 94, PAGES 31-39)

SHEET 2 OF 4



POINT OF COMMENCEMENT  
N.E. CORNER SECTION 11-45-42  
FOUND PALM BCH. CO. MONUMENT  
N 814584.85  
E 943321.72  
2,652.68'(GROUND)

POINT OF BEGINNING NO.1  
UNABLE TO SET FALLS IN CANAL  
N 814528.91  
E 943267.66

POINT OF BEGINNING NO.2  
SET PRM  
N 814480.15  
E 943313.50

SET PRM  
N 814421.78  
E 943268.02

EAST LINE OF SECTION 11-45-42  
AS ESTABLISHED AND MONUMENTED  
BY THE PALM BEACH COUNTY  
ENGINEERING DEPARTMENT

SET PRM  
N 814253.79  
E 943270.62

SET PRM  
N 814253.42  
E 943271.02

R=640.00'  
Δ=15°14'38"  
L=170.28'

R=641.64'  
Δ=18°16'55"  
L=204.73'

R=746.90'  
Δ=01°15'47"  
L=16.47'

Δ=11°39'27"  
R=1764.00'  
L=358.90'

Δ=11°39'27"  
R=1764.00'  
L=358.90'

Δ=11°39'27"  
R=1764.00'  
L=358.90'

E. 1/2 OF THE N.W. 1/4 OF SECTION 12-45-42  
A RECORDED PLAT OF MARY A. LYMAN  
(PLAT BOOK 9, PAGE 74)

MATCH LINE  
SHEET 3 OF 4

TRACT W  
WATER MANAGEMENT/DRAINAGE TRACTS TO  
BE OWNED AND MAINTAINED BY THE VISTA  
LAGO OF PALM BEACH COUNTY HOMEOWNERS  
ASSOCIATION, INC., ITS SUCCESSORS AND OR  
ASSIGNS, WITHOUT RECOURSE TO PALM  
BEACH COUNTY SUBJECT TO EXISTING  
LITTORAL ZONE RESTRICTIVE COVENANT  
AGREEMENT, AS RECORDED IN O.R.B. 20653,  
PAGE 1741, PUBLIC RECORDS OF PALM  
BEACH COUNTY, FLORIDA

CURVE TABLE

CURVE NO.	CHORD BEARING	CHORD DISTANCE
C1	N89°08'58"E	51.47'
C2	N89°08'58"E	51.47'
C3	S17°05'08"W	91.47'
C4	S61°53'42"W	158.56'
C5	N04°36'07"E	162.70'
C6	N01°41'15"E	324.97'
C7	N1°13'37"W	101.69'
C8	S27°31'02"W	136.91'
C9	S17°16'31"W	597.88'
C10	S10°45'25"W	267.21'
C11	S00°50'50"W	20.00'